

PONSSE



**A PERFECT TEN
FOR EFFICIENCY**

PONSSE GAZELLE



SMALL AND AGILE POWER PACK

PONSSE Gazelle is small in size but strong in power. Light weight and even weight distribution are combined with an effective loader to ensure efficiency under nature's terms.



PONSSE Gazelle follows in the footsteps of its big brother PONSSE Wisent by bringing the most modern forwarder technology on the market to the smaller 10-ton size class. The efficiency and reliability of PONSSE Gazelle forwarder is based on the latest materials, high-class components and modern manufacturing technology. And don't be fooled by the Gazelle's small size: its efficient four-cylinder Mercedes-Benz diesel engine, powerful K70+ crane and great pulling force combined with the modern OptiControl

management system ensure unprecedented efficiency in its size class.

PONSSE Gazelle's low weight, small turning radius, optimally shaped bunks and even weight distribution mean that the most demanding harvesting sites can be treated with care and respect. Steady basic machine and strong crane help the driver harvest trees at extreme reaches without damaging the residual tree stand. With PONSSE Gazelle, environmental friendliness is built-in.



PONSSE GAZELLE

DIMENSIONS

Weight:	
Minimum weight:	27337 lb (12 400 kg)
Typical weight:	30424 lb (13 800 kg)
Length:	347-357 in (8830-9080 mm) + sliding bunk 24 in (610 mm)
Width:	96-106 in (2450-2690 mm)
Ground clearance:	24 in (600 mm)
Transportation height:	146 in (3710 mm)
Steering angle:	± 44°
Outer turning radius:	295 in (7,5 m)

ENGINE

Model:	Mercedes-Benz OM 904 LA
Power:	129 kW (175 hp)
Torque:	675 Nm/1200-1600 rpm
Tractive force:	29,225 lbf (130 kN)
Driving speed:	0-14 mph (0-23 km/h)
Fuel tank volume:	34 gal (130 l)

TYRES

Front and back:	600/50-22,5" or 710/40-22,5"
-----------------	------------------------------

HYDRAULIC SYSTEM

PONSSE OptiControl control system	
Working pump:	8.8 cu in (145 cm ³)
Oil tank volume:	34 gal (130 l)

CONTROL SYSTEM

PONSSE OptiControl	
--------------------	--

LOADER

Model:	PONSSE K70+ M/S
Lifting moment:	78,182 lb ft (106 kNm)
Reach:	S: 25.6 ft M: 32.8 ft (S: 7,8 m M: 10,0 m)

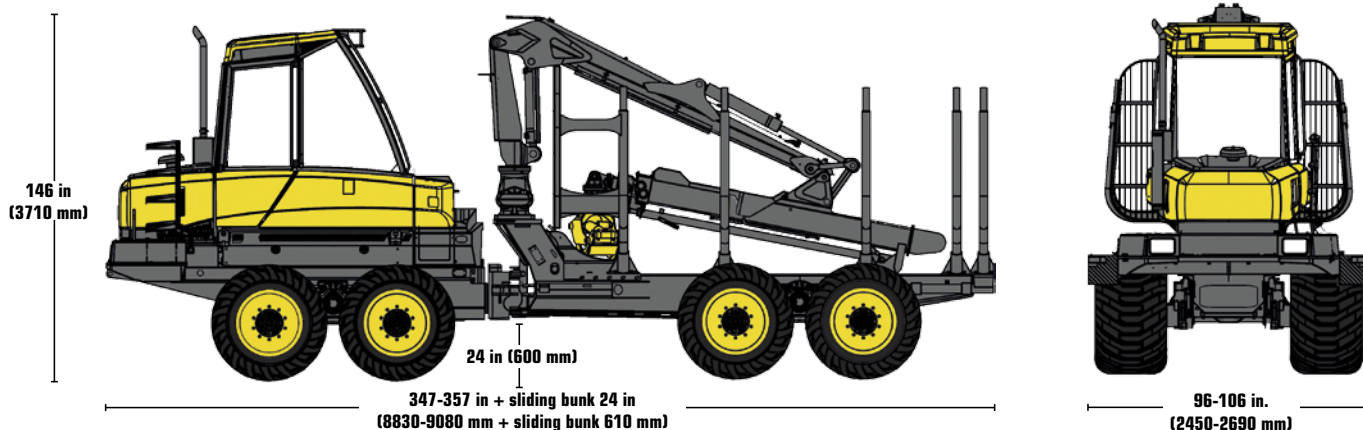
GRAPPLE

Model:	Several different grapple alternatives
--------	--

LOAD SPACE

Capacity:	22,046 lbs (10 000 kg)
Load space cross-sectional area:	41 ft ² (3,8 m ²)
Load space length:	165-189 in (4200-4810 mm)

Plenty of optional equipment is available in addition to the comprehensive PONSSE Gazelle standard equipment. Consult your nearest Ponsse Service Center or dealer for more information on the standard and optional equipment.



The manufacturer reserves the right to make technical changes and improvements.



Ponsse Plc
 Ponssentie 22
 FI-74200 Vieremä
 FINLAND
 Tel. +358 20 768 800
 Fax +358 20 768 8690

Ponsse North America, Inc.
 4400 International Lane
 Rhinelander, WI 54501
 USA
 Tel. +1 715 369 4833
 Fax +1 715 369 4838

Ponsse UK Ltd.
 Unit 3, Broomhouses 1
 Industrial Estate
 Lockerbie,
 Dumfriesshire DG11 2RZ
 UNITED KINGDOM
 Tel. +44 1576 203 000
 Fax +44 1576 202 202

A logger's best friend
www.ponsse.com